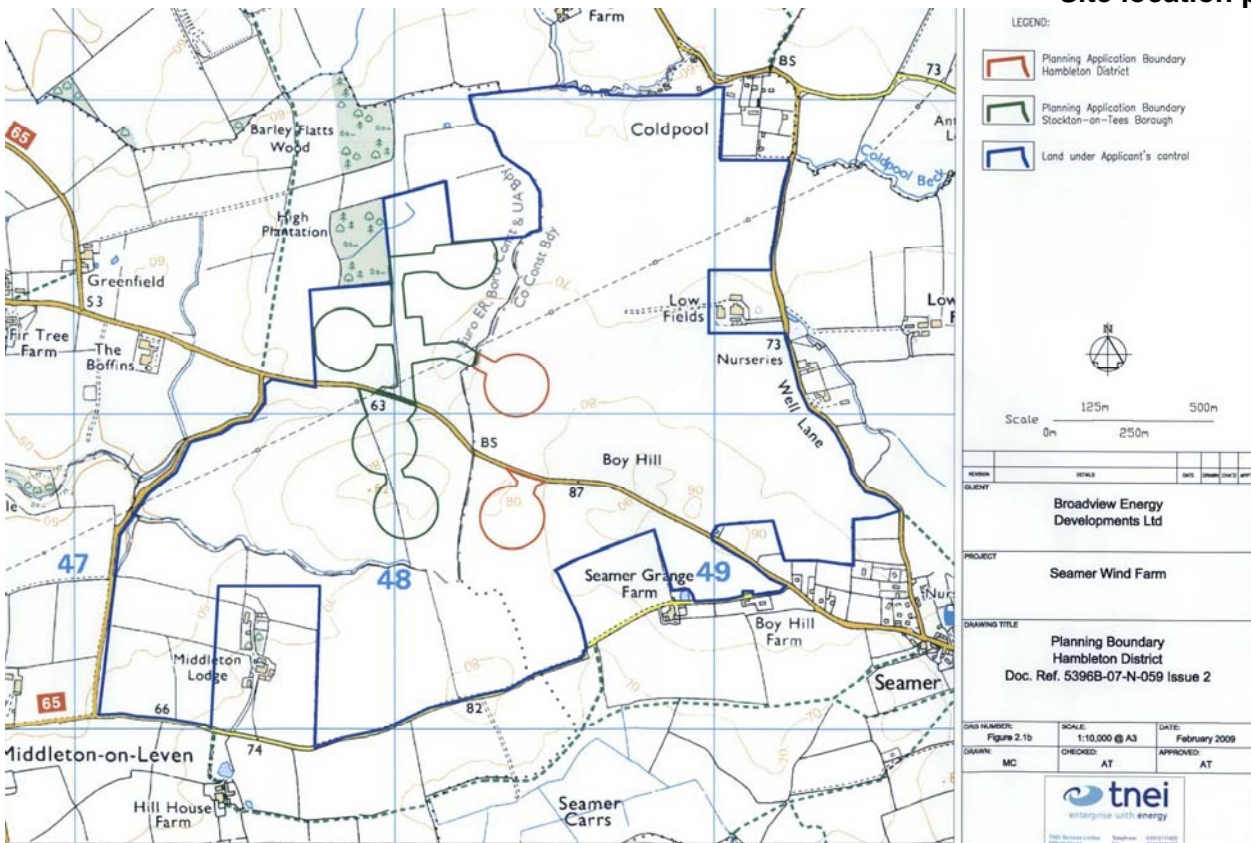
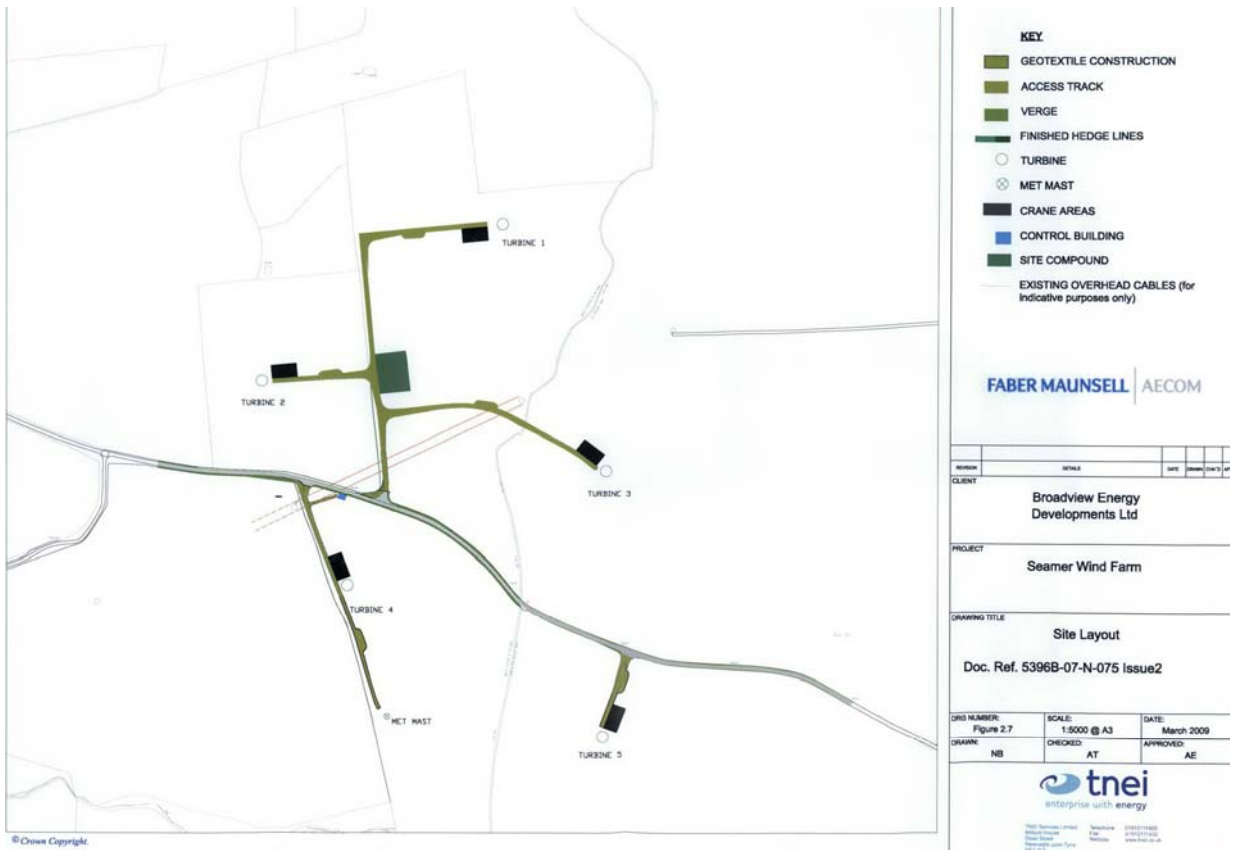


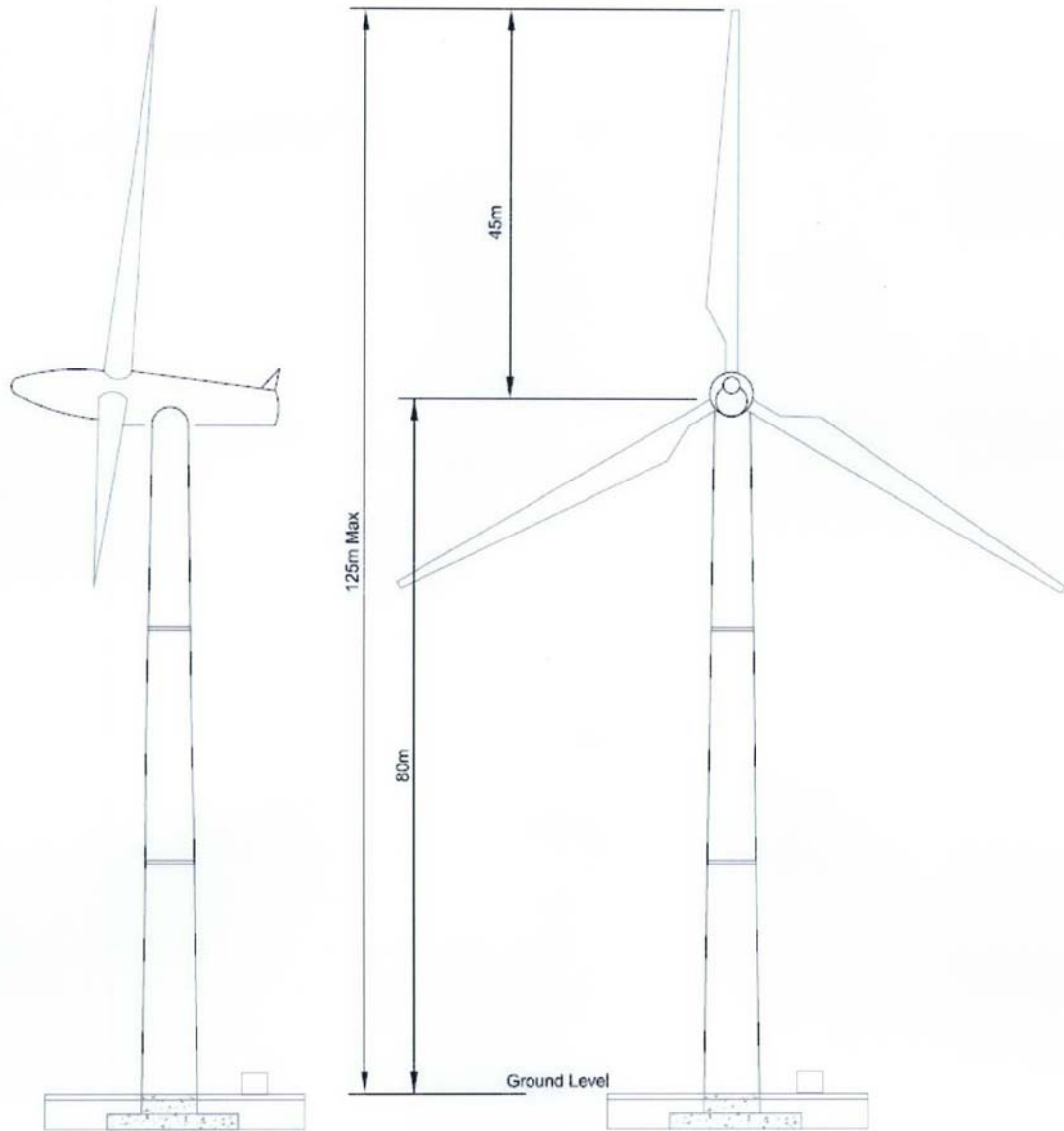
09/0736/EIS – Seamer / Hilton Wind Farm  
 Appendix reference 1.  
 Site location plan



09/0736/EIS – Seamer / Hilton Wind Farm  
 Appendix reference 2.  
 Site Layout Plan



09/0736/EIS – Seamer / Hilton Wind Farm  
 Appendix reference 3  
 Typical Turbine Detail



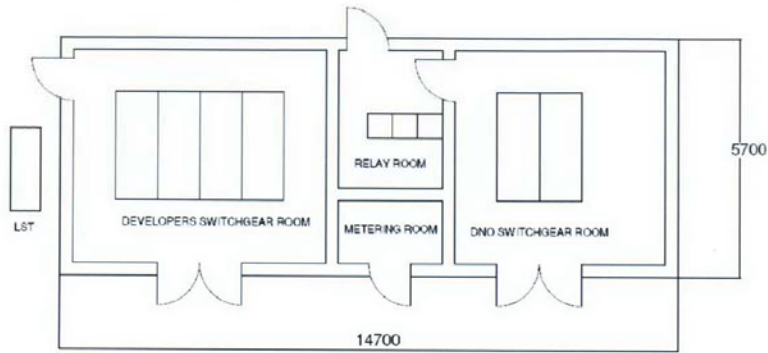
Project	Proposed Seamer Wind Farm
Client	Broadview Energy Developments Ltd
Title	Typical Wind Turbine
Figure Number	2.2 (Rev A)
Scale	1:500@A3
Drawn	GS
Checked	JM
Date	June 2008
Reference Number	5396B-07-N-060



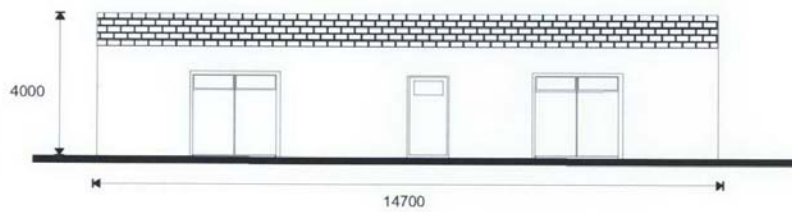
TNEI Services Limited Telephone 01912111400  
 Milburn House Fax 01912111432  
 Dean Street Website www.tnei.co.uk  
 Newcastle upon Tyne  
 NE1 1LE

09/0736/EIS – Seamer / Hilton Wind Farm  
Appendix reference 4  
Typical Control Building

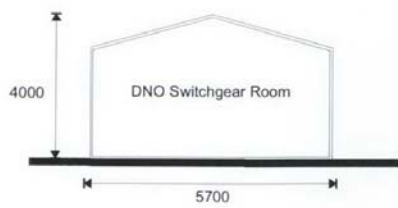
WINDFARM CONTROL BUILDING



PLAN

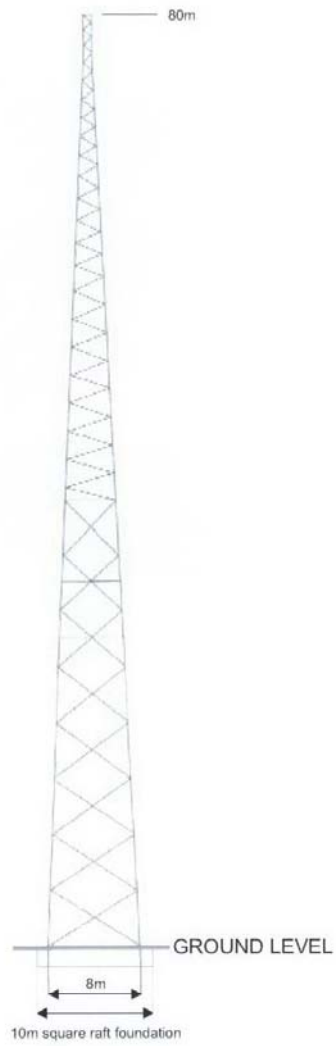


FRONT ELEVATION



SIDE ELEVATION

09/0736/EIS – Seamer / Hilton Wind Farm  
Appendix reference 5  
Met Mast

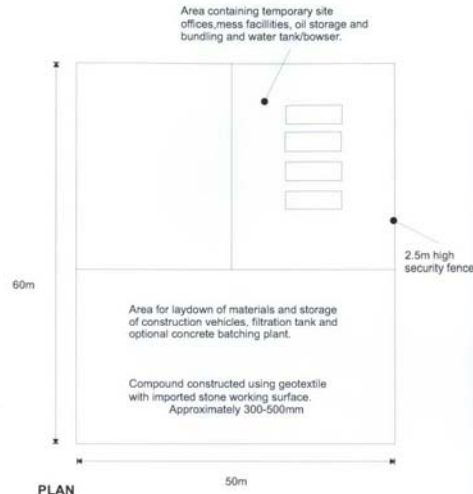


**09/0736/EIS – Seamer / Hilton Wind Farm**  
**Appendix reference 6**  
**Typical compound Layout**



Layout of the site compound as shown is indicative - final layout within the designated 15m x 50m area will be selected by the site civil contractor and if required, agreed in advance with the Local Planning Authority.

Following the construction period, all temporary offices, containers, machinery and equipment shall be removed and the compound area restored.



PLAN



Scale 12.5m 25m

Project	Proposed Seamer Wind Farm
Client	Broadview Energy Developments
Title	Typical Compound Area Design
Figure Number	2.4
Scale	1:500@ A3
Drawn	MC
Checked	GS
Date	June 2008
Document Reference	5396B-07-N-062



TNEI Services Limited  
 Medium House  
 Dean Street  
 Newcastle upon Tyne  
 NE1 1LE

Telephone 01912111400  
 Fax 01912111432  
 Website www.tnei.co.uk